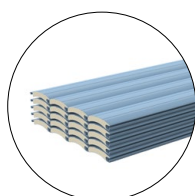
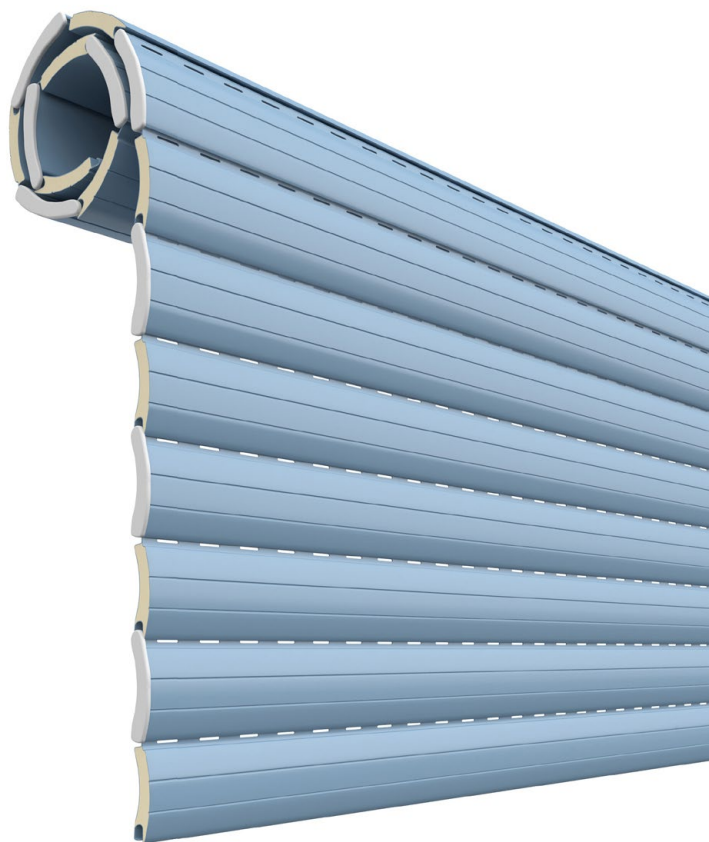


AVVOLGIBILE IN ALLUMINIO COIBENTATO
CON POLIURETANO **MEDIA DENSITÀ**

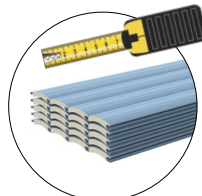
CARATTERISTICHE TECNICHE

DIMENSIONE PROFILO	12 x 55 mm
PESO PER mq	c.ca 3,1 Kg
SPESSORE ALLUMINIO	0,30 mm
BARRE PER 1 mt DI ALTEZZA	18
LARGHEZZA MASSIMA CONSENTITA	4200 mm

N.B. Per misure superiori a 3000 mm è consigliabile utilizzare la GUIDA A 40



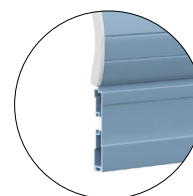
STECHE a barre



STECHE tagliate su misura



TERMINALE in gomma

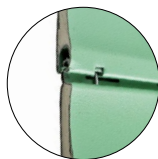


TERMINALE in alluminio 14 x 55

Bloccaggio stecca



STANDARD
CON TAPPO
LATERALE
SPILLATO

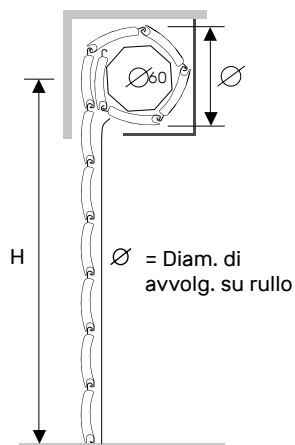


CON CHIODO
METALLICO
MAGGIORAZIONE
DEL 15%



CON TAPPO
SCARPETTA
SPILLATO
SU STECCHE
ALTERNATE
MAGGIORAZIONE
DEL 15%
GUIDE COMPATIBILI
A30, A27, IN FERRO

Diametro di avvolgimento

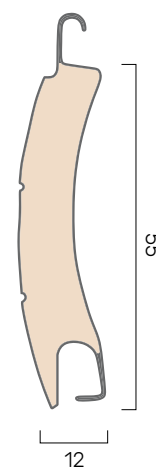


Su rullo ø 60 mm
altezza telo -> diametro

- 1000 -> 145
- 1200 -> 150
- 1300 -> 155
- 1400 -> 160
- 1500 -> 165
- 1600 -> 170
- 1700 -> 175
- 1800 -> 175
- 1900 -> 180
- 2000 -> 185
- 2200 -> 190
- 2400 -> 190
- 2600 -> 200
- 2800 -> 205
- 3000 -> 210
- 3300 -> 220

misure in mm

PROFILO

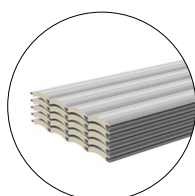
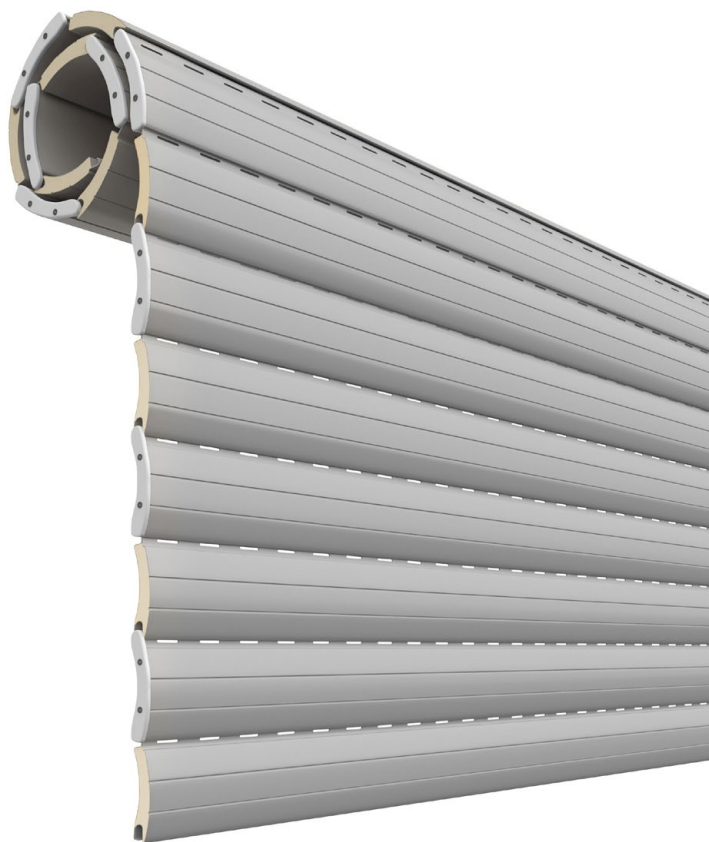


AVVOLGIBILE IN ALLUMINIO COIBENTATO
CON POLIURETANO ALTA DENSITÀ

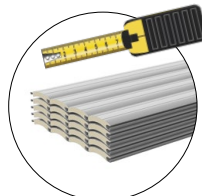
CARATTERISTICHE TECNICHE

DIMENSIONE PROFILO	12 x 55 mm
PESO PER mq	c.ca 4,8 Kg
SPESSORE ALLUMINIO	0,30 mm
BARRE PER 1 mt DI ALTEZZA	18
LARGHEZZA MASSIMA CONSENTITA	4200 mm

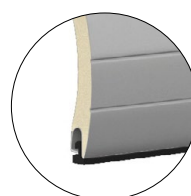
N.B. Per misure superiori a 3000 mm è consigliabile utilizzare la GUIDA A 40



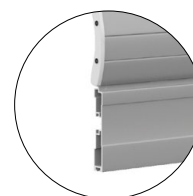
STECHE
a barre



STECHE
tagliate su
misura

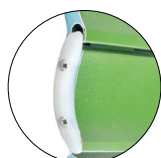


TERMINALE
in gomma

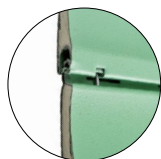


TERMINALE
in alluminio 14 x 55

Bloccaggio stecca



STANDARD
CON TAPPO
LATERALE
AVVITATO

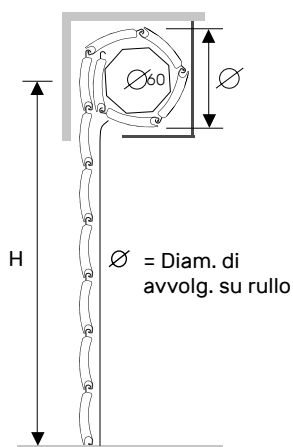


CON CHIODO
METALLICO
MAGGIORAZIONE
DEL 15%



CON TAPPO
SCARPETTA
AVVITATO
SU STECCHE
ALTERNATE
MAGGIORAZIONE
DEL 15%
GUIDE COMPATIBILI
A30, A27, IN FERRO

Diametro di avvolgimento

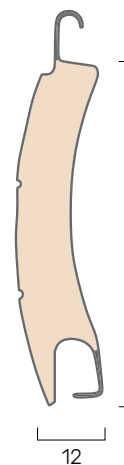


Su rullo \varnothing 60 mm
altezza telo -> diametro

- 1000 -> 145
- 1200 -> 150
- 1300 -> 155
- 1400 -> 160
- 1500 -> 165
- 1600 -> 170
- 1700 -> 175
- 1800 -> 175
- 1900 -> 180
- 2000 -> 185
- 2200 -> 190
- 2400 -> 190
- 2600 -> 200
- 2800 -> 205
- 3000 -> 210
- 3300 -> 220

misure in mm

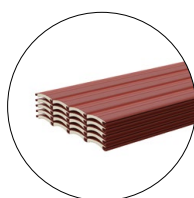
PROFILO



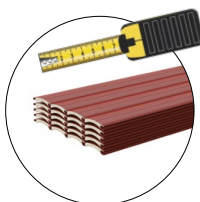
AVVOLGIBILE IN ALLUMINIO COIBENTATO
CON POLIURETANO **MEDIA DENSITÀ**

CARATTERISTICHE TECNICHE

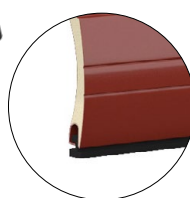
DIMENSIONE PROFILO	9 x 45 mm
PESO PER mq	c.ca 3,0 Kg
SPESSORE ALLUMINIO	0,28 mm
BARRE PER 1 mt DI ALTEZZA	22
LARGHEZZA MASSIMA CONSENTITA	3500 mm



**STECHE
a barre**



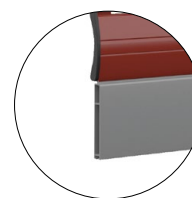
**STECHE
tagliate su
misura**



**TERMINALE
in gomma**



**TERMINALE
in allu. 9 x 55**



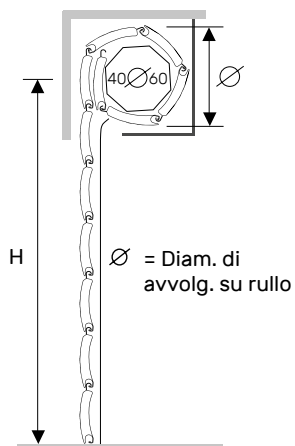
**TERMINALE
in allu. 7,5 x 52**

Bloccaggio stecca



STANDARD
CON TAPPO
LATERALE
SPILLATO

Diametro di avvolgimento



Su rullo \varnothing 40

altez. telo -> diametro

1000 -> 115
1200 -> 125
1300 -> 130
1400 -> 130
1500 -> 135
1600 -> 140
1700 -> 145
1800 -> 150
1900 -> 150
2000 -> 155
2200 -> 160
2400 -> 165
2600 -> 170
2800 -> 175
3000 -> 180
3300 -> 185

misure in mm

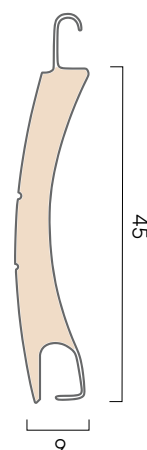
Su rullo \varnothing 60

altez. telo -> diametro

1000 -> 115
1200 -> 120
1300 -> 125
1400 -> 130
1500 -> 140
1600 -> 145
1700 -> 150
1800 -> 155
1900 -> 160
2000 -> 165
2200 -> 165
2400 -> 170
2600 -> 175
2800 -> 175
3000 -> 185
3300 -> 190

misure in mm

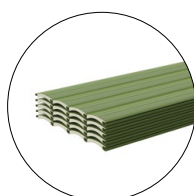
PROFILO



AVVOLGIBILE IN ALLUMINIO COIBENTATO
CON POLIURETANO ALTA DENSITÀ

CARATTERISTICHE TECNICHE

DIMENSIONE PROFILO	9 x 45 mm
PESO PER mq	c.ca 3,9 Kg
SPESSORE ALLUMINIO	0,28 mm
BARRE PER 1 mt DI ALTEZZA	22
LARGHEZZA MASSIMA CONSENTITA	3500 mm



STECHE
a barre



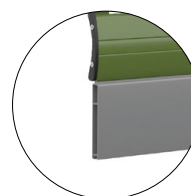
STECHE
tagliate su
misura



TERMINALE
in gomma

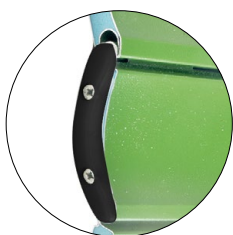


TERMINALE
in allu. 9 x 55



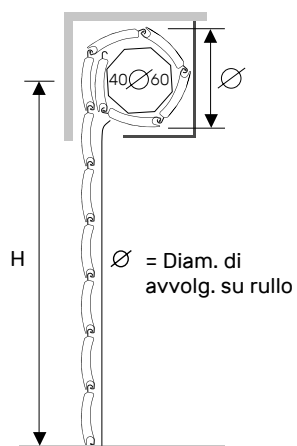
TERMINALE
in allu. 7,5 x 52

Bloccaggio stecca



STANDARD
CON TAPPO
LATERALE
AVVITATO

Diametro di avvolgimento



Su rullo ø 40
altez. telo -> diametro

1000 -> 115
1200 -> 125
1300 -> 130
1400 -> 130
1500 -> 135
1600 -> 140
1700 -> 145
1800 -> 150
1900 -> 150
2000 -> 155
2200 -> 160
2400 -> 165
2600 -> 170
2800 -> 175
3000 -> 180
3300 -> 185

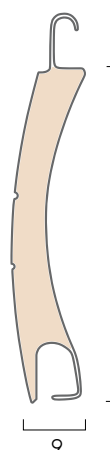
misure in mm

Su rullo ø 60
altez. telo -> diametro

1000 -> 115
1200 -> 120
1300 -> 125
1400 -> 130
1500 -> 140
1600 -> 145
1700 -> 150
1800 -> 155
1900 -> 160
2000 -> 165
2200 -> 165
2400 -> 170
2600 -> 175
2800 -> 175
3000 -> 185
3300 -> 190

misure in mm

PROFILO



9